

**Connecting
Your
Business**

**Wherever
You Are**

**Oil
&
Gas
Field
Products**



PSL Pipe & Fittings Co.



**American
Petroleum
Institute**



2015-313

Certificate of Authority to use the Official API Monogram

License Number: 6A-1765

ORIGINAL

The American Petroleum Institute hereby grants to

PSL PIPE & FITTINGS CO.

Works. Survey No. 21, Hissa No. 2A, Gala No. 28, 29, 30

**Choudhary Compound, Near Choudhary Khadan, VPO Bilal Pada, Vasai
East, District Thane
Mumbai, Maharashtra
India**

the right to use the Official API Monogram® on manufactured products under the conditions in the official publications of the American Petroleum Institute entitled API Spec Q1® and **API-6A** and in accordance with the provisions of the License Agreement.

In all cases where the Official API Monogram is applied, the API Monogram shall be used in conjunction with this certificate number: **6A-1765**

The American Petroleum Institute reserves the right to revoke this authorization to use the Official API Monogram for any reason satisfactory to the Board of Directors of the American Petroleum Institute.

The scope of this license includes the following: Adapter and Spacer Spools, Flanged Connectors, Tees and Crosses, Threaded Connectors at PSL 1, PSL 2, PSL 3; Bullplugs (PSL not Applicable); Ring Joint Gaskets (PSL not Applicable)

QMS Exclusions: Servicing

Effective Date: MAY 19, 2016

Expiration Date: MAY 19, 2019

To verify the authenticity of this license, go to www.api.org/compositelist.

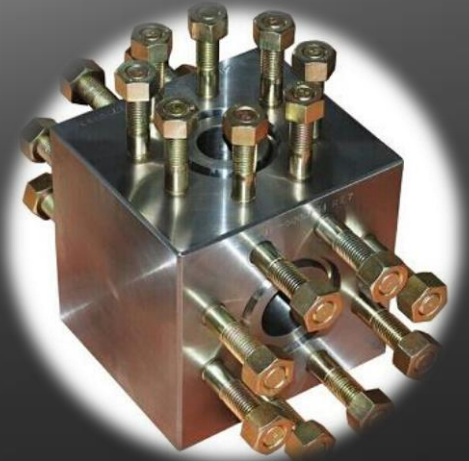
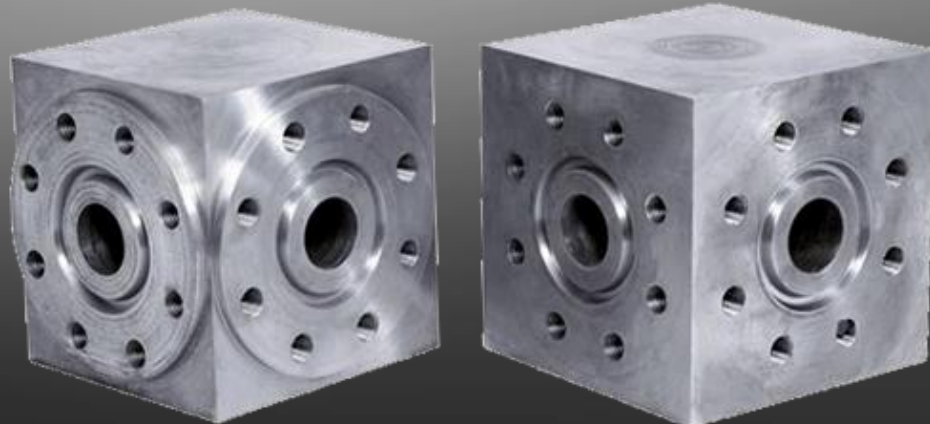
Vice President, API Global Industry Services



ADAPTER FLANGE WITH UNION END CONNECTION

These products are supplied as per customer requirements of PSL levels, material class and temperature class. These items are supplied with full material traceability record.

STUDDED TEE & CROSS





ADAPTER SPOOL

These products are supplied as per customer requirements of PSL levels, material class and temperature class. These items are supplied with full material traceability record.

SPACER SPOOL





WELD NECK FLANGE

These products are supplied as per customer requirements of PSL levels, material class and temperature class. These items are supplied with full material traceability record.

COMPANION FLANGE





BLIND FLANGE

These products are supplied as per customer requirements of PSL levels, material class and temperature class. These items are supplied with full material traceability record.

BULL PLUG



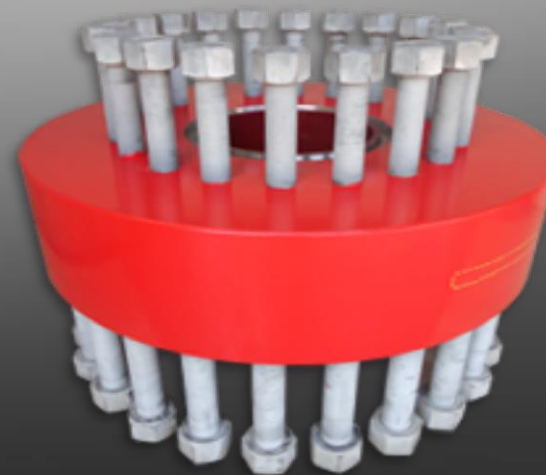
RING JOINT GASKET



These products are supplied as per customer requirements of PSL levels, material class and temperature class. These items are supplied with full material traceability record.



DOUBLE STUDDED ADAPTER FLANGE



HUMMER UNIONS

Extra High Pressure Figure 1502 assembled Union are manufactured from hot forged alloy steel with special chemical properties, and are carefully heat-treated to enhance tensile strength and low temperature impact properties. Standard union end combinations are stocked and any size to figure number combination can be delivered with minimum lead time.



PUP JOINTS



The lightweight pup joints with integral wing union end connections enable faster, easier make-up and break-out of temporary flow lines than ever before. Available in lengths up to 12 feet, these alloy-steel pup joints efficiently handle a complete range of well servicing fluids at cold working pressures up to 15,000 psi. pup joints are also available for sour gas services at working pressures up to 10,000 psi



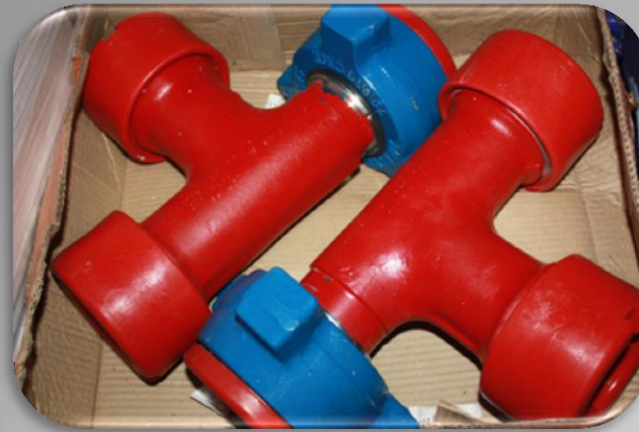
LOOPS

Cementing and circulating flexible steel hoses offer the widest range of proven designs for today's demanding requirements. hoses are available for all your requirements; 6,000 to 15,000 PSI



SWIVEL JOINTS

Tri race code red swivel joints are designed for the critical service conditions that exist in fracturing, cementing, acidizing, and well testing. Available in 2" & 3" sizes with 15,000 PSI working pressure and 22,500 PSI test pressures. They come with 1502, 1002, and 602 union ends for fast, easy make-up. Race code black swivels are available in 10,000 PSI working pressure with female line pipe thread end connections



TEE MALE & FEMALE

Extra High Pressure Figure 1502 Integral Union Ells are manufactured from hot forged alloy steel with special chemical properties, and are carefully heat-treated to enhance tensile strength and low temperature impact properties. Standard union end combinations are stocked and any size to figure number combination can be delivered with minimum lead time. Flowback Ell can be delivered with a "filled" target.

ELBOW MALE & FEMALE



LATERAL & WYE WITH MALE & FEMALE UNION ENDS

Our integrals come with full trace-ability and are manufactured from the highest quality raw materials like hot forged alloy steel with special chemical properties, and are carefully heat-treated to enhance tensile strength and low temperature impact properties. Standard union end combinations are stocked and any size to figure number combination can be delivered with minimum lead time.



Certificate of Registration



The Governing Board of
Q.A. International Certification Limited
hereby grants to:

PSL PIPE & FITTINGS CO.

Registration No.: QAIC / IN / 1237 - A

(hereinafter called the Registered Company) the right to be listed in the Directory of Registered Companies in respect of the services listed below. These services shall be offered by the Registered Company at or from only the address given below in accordance with the quality management system in compliance with ISO 9001:2008.

Address to which this Certificate refers:

**14/B, Gora Gandhi Palace, Ground Floor,
122, Khetwadi Back Road, Mumbai – 400 004, India**

And Also At: -

**Survey No.21, Hissa No. 2A, Gala No. 28,29,30 Choudhary Compound, Bila Pada, Vasai
(East), Pin – 401 208, Dis-Thane, Maharashtra, India**

Approved Scope to which this Certificate refers:

**Manufacture and Supply of Wellhead Accessories, Flange Connectors,
High Pressure Flow Line Union End Connectors & High Pressure Pipe Fittings.**

Signed for and on behalf of the Board

CHIEF EXECUTIVE

SCHEME MANAGER

Certificate Issue Date : 12th February 2016 - Certificate Expiry Date : 9th October 2016
Date of Initial Registration : 23rd December 2014 - Re-certification Before : 9th October 2017

This Certificate of Registration is granted subject to the Regulations approved by the Board.

QA INTERNATIONAL

Q.A. International Certification Ltd.
Dudley Court
Dudley Road
Darlington
United Kingdom
DL1 4GG

Tel: +44 (0)1325 384272
Fax: +44 (0)1325 480980
www.qai.co.uk



The use of the Accreditation Mark indicates accreditation in respect of those activities covered by the accreditation certificate number 040.



THANK YOU

PSL PIPE & FITTINGS CO.

CORPORATE OFFICE:-

14/B, GORA GHANDHI PALACE, GROUND
FLOOR, 122, KHETWADI BACK ROAD
MUMBAI-400004 MAHARASTRA INDIA

Land Line# : +91 22 67436796

Email Us at: sales@pslpipefittings.com
intsales@pslpipefittings.com
marketing@pslpipefittings.com

Works:

SURVEY NO. 21, HISSA NO. 2A,
GALA NO 28,29,30 CHOUDHARY COMPOUND
NEAR CHOUDHARY KHADAN,
VPO: VALIV, BILAL PADA VASAI EAST 401208
DISTRICT THANE MAHARASHTRA, INDIA

Land Line#: +91 250 651 8887

Email Us at: psladmin@pslpipefittings.com